



BASE BOARD

RESISTANT
BUILDING PRODUCTS (2025) LTD

Technical Data Sheet



Resistant Base Board is a high quality, high performance, A1 Non-combustible general purpose magnesium oxide building board. The boards are very robust, resistant to the effects of weather and dimensionally stable during the construction phase of the project. The board is dual faced (one side keyed / other side smooth) to increase flexibility of suitable applications.

Key Benefits

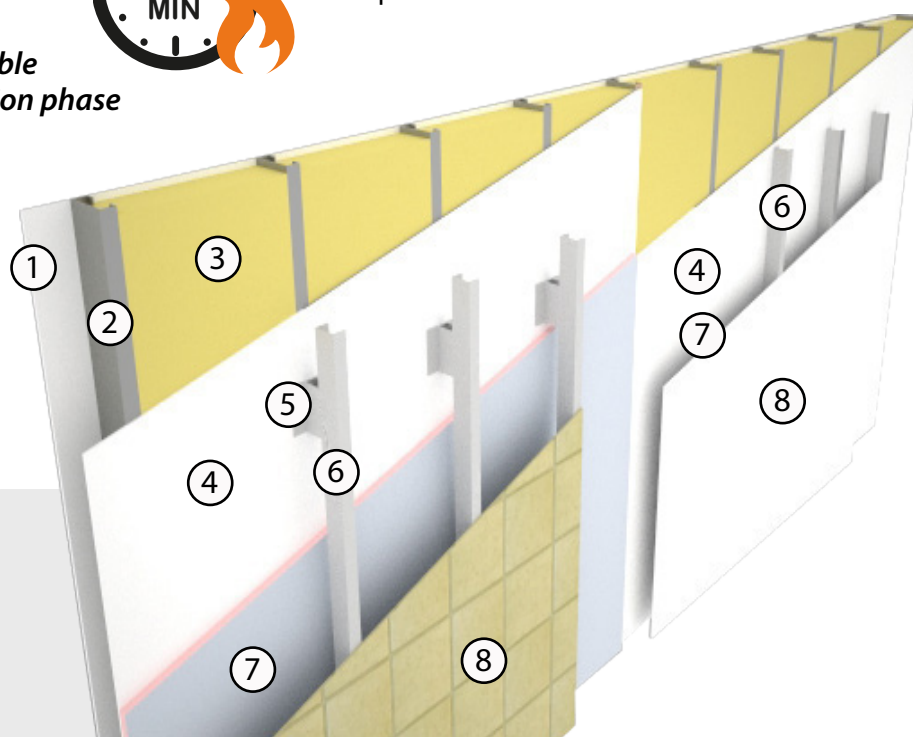
- **Tested to EN 13501-1 A1 Non-Combustible**
- **Weather Resistant during the construction phase**
- **Breathable and Vapour Permeable**
- **Robust & High Strength**
- **Excellent Dimensional Stability**
- **Easy to Handle**
- **Easy to Score & Snap or Machine Cut**
- **Good Edge Fixing Properties with Screw or Nail**
- **High Pull Out & Pull Through Strengths**
- **Low Carbon Manufacturing Process**



baumit.com



12mm achieves 60mins fire resistance on steel stud partition-see our Passive Fire Protection Guide Brochure for details of in to out and out to in build ups.



Key:

1. Internal Lining Board (Multi-Pro).
2. Steel Frame.
3. Insulation.
4. **Resistant Base Board 10/12.**
5. Curtain Wall Bracket.
6. Steel or Timber Vertical Fixing Battens for External Render Carrier Board. (minimum 25mm Ventilated Cavity)
7. Rigid Insulation &/or 25mm clear Airspace for Render Carrier.
8. External Facade of Curtain Walling or Render Carrier.
(Resistant Base Board 10/12)

MANUFACTURE

Resistant Base Board is manufactured using inorganic substances, CaCO₃, MgO, MgCl₂ and alkaline resistant mesh.

The product is naturally cured using no energy through cold fusion unlike similar competitive products on the market which use autoclaving technology. This ensures that Resistant Base Board has a relatively low impact on the environment. Base Board achieves its superior strength and flexibility with the introduction of alkaline resistant glass fibre mesh within the Board. Consistent high quality of the product is maintained through a sophisticated digitally controlled process to ensure a superior finished Board always reaches our commitment to quality assurance.

We recommend use in tandem with a breather membrane. If required the fitting gaps between boards can be sealant filled and / or taped dependant on project requirements.

When fitting a 3-4mm gap should be left between boards. Joints should be taped over or sealant filled.

TYPICAL USES

Ideal for applications such as;

- Non-Combustible Sheathing for SFS
- Volumetric Infill
- Suitable Substrate for Tiles
- SIPS
- Pre-Insulated Panels
- Off-Site Modular Systems
- Render Carrier Board

Please note this is not a definitive list



RESISTANT
BUILDING PRODUCTS (2025) LTD

BASE BOARD



Technical Data Sheet

Technical SPECIFICATION

Test Subject

Density Dry (ex works)

Reaction to Fire

Thermal Conductivity at 50°C

Average Tensile Strength

Tensile Strength (Perpendicular to plane)

Bending Modulus (Average)

Bending Strength (mor) - wet

Impact Strength

Average Screw Withdrawal Strength

Vapour Permeability

Change in thickness
(Immersion in water 24hours)

Change in length
(Immersion in water 24hours)

Test

EN 13501-1

BS EN 12664

BS EN 321

BS EN 319

BS EN 310

BS EN 12467

Brinell

BSEN 12086

Result

1110 - 1200 Kg/m³

A1 Non-combustible

0.307 W(m.K)

2.04 N/mm²

2.80 N/mm²

5656 N/mm²

10mm 10.59 MPa Class 2

12mm 9.69 MPa Class 2

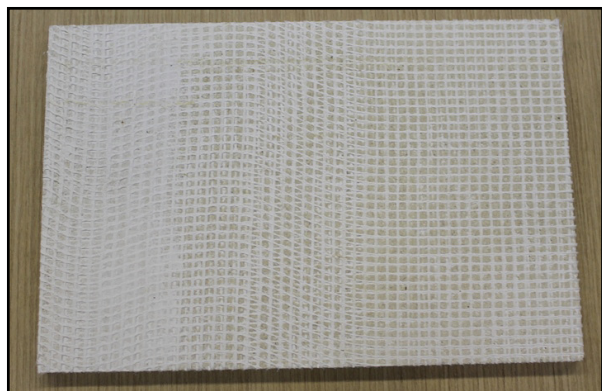
34 mm/mm²

81.9 N/mm²

53 g/m²/hour

0 - 0.2%

<1%



Base Board Keyed Surface



Base Board Smooth Surface

DIMENSIONS

Base Board is supplied as a rectangular board with square edges and is white in colour.

Thickness: 10mm & 12mm

Sizes: 1200 x 2400mm

Special size requirements are also available upon request depending on quantity required.

TOLERANCES

Length and Width: + / - 2mm

Thickness: + / - 0.2mm

Edge Straightness: 1mm / metre

Squareness of edge: < 3mm

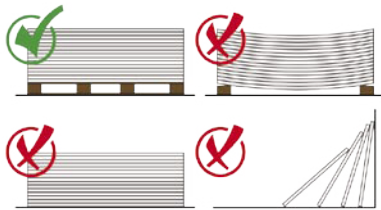


RESISTANT

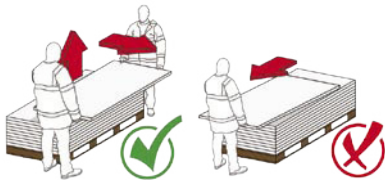
BUILDING PRODUCTS (2025) LTD

BASE BOARD

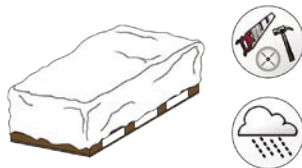
Technical Data Sheet



Resistant boards should be stored flat, raised from the ground on a pallet, in dry conditions indoors and be under cover. Boards should not be leant upright for long periods of time



Boards should always be lifted by 2 people and not dragged across each other to prevent unnecessary scratching or damage.



Any moisture allowed to infiltrate between the sheets will cause permanent surface staining. They should be protected from the weather and other trades on site at all times



Boards should be carried on edge and extra precaution should be taken to protect the visible front edge and corners.

SUPERIOR ATTRIBUTES

Apart from accepting a variety of painted/polished finishes, Resistant boards provide an excellent compatible surface to a wide range of finishing materials i.e. paints, tiles, veneers, laminates or indeed any finishing option that comes to the creative mind of an architect or interior designer. The acceptance of Resistant in the highly competitive international market stands testimony to its superior attributes



Reaction to Fire

A1 Non-combustible EN 13501-1



Thermal Insulation Properties

Ability to withstand a high range of hot and cold cycles (Thermal Shock)



Impact Resistant

An ability to withstand abuse, including surface impact - 34 N/mm²



Low Carbon Manufacturing Process

A natural cured process with a chemical reaction using low levels of heat and a lengthy drying out stage



Moisture & Water Resistant

Resistant boards will not physically deteriorate when subjected to water or moisture during the construction phase



Rodent Resistant

Resistant to rodent infestation like mice, rats and insects



Easy and Fast to work

Simple to prepare and fix. Unique double faced (smooth or keyed) surfaces allow fast to fit of one board for Multiple Applications



Mould Resistant

Unlike paper faced/wood based products, Resistant does not contain cellulose, limiting mould growth



Breathability

Ensures a healthy, durable working building with a natural ability to absorb and release moisture



Chemically Stable

Produced from natural inorganic raw materials, resulting in a strong, durable chemically stable board



Non-Hazardous to Health

Will not cause harm to persons and/or the environment.

If being used externally with a paint rather than render finish then boards should firstly be coated face and edges with an acrylic primer. For detailed fitting advice contact below.